

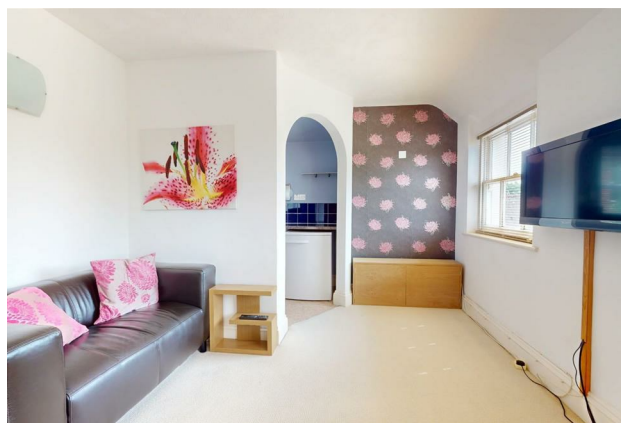
HUNTERS®

HERE TO GET *you* THERE

Flat 19 Park View Court, Dashwood Road, Park View Court, Dashwood Road, DA11 7LY

Offers In The Region Of £130,000

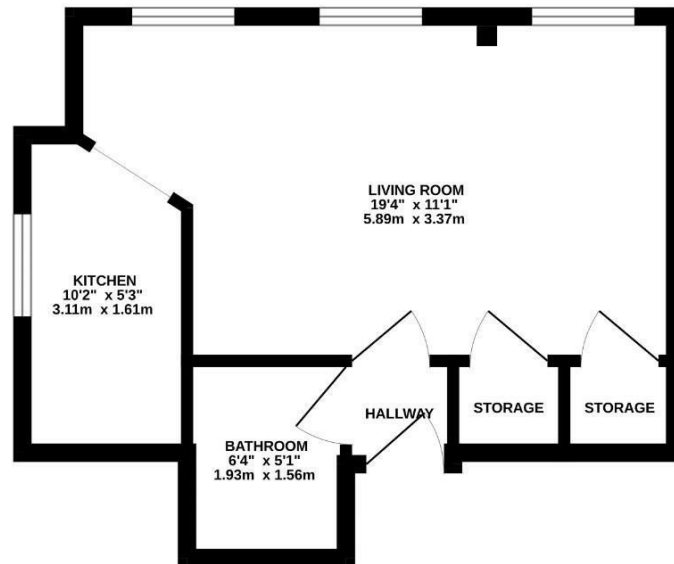
Property Images



HUNTERS®

HERE TO GET *you* THERE

SECOND FLOOR
306 sq.ft. (28.4 sq.m.) approx.



TOTAL FLOOR AREA: 306 sq ft (28.4 sq.m.) approx.

Whilst every attempt has been made to ensure the accuracy of the floorplan contained here, measurements of doors, windows, floors and any other items are approximate and no responsibility is taken for any error, omission or mis-statement. This plan is for illustrative purposes only and should be used as such by any prospective purchaser. The services, systems and appliances shown have not been tested and no guarantee as to their operability or efficiency can be given.
Made with Mapbox C2D5

EPC

Energy Efficiency Rating		
	Current	Potential
Very energy efficient - lower running costs		
(92 plus) A		81
(81-91) B		
(69-80) C		
(55-68) D	62	
(39-54) E		
(21-38) F		
(1-20) G		
Not energy efficient - higher running costs		
England & Wales		EU Directive 2002/91/EC

Map



Details

Type: Studio Beds: null Bathrooms: 1 Receptions: 1 Tenure: Leasehold

Available to view now is this studio flat in Park View Court, Dashwood Road offering no forward chain.

Please note, the flat is situated within a Grade II listed building to the second floor.

The studio flat features a reception room that serves as a versatile space, a kitchen and a bathroom. There is also the added bonus of an allocated parking space.

Situated close to the town centre, residents will enjoy easy access to a variety of shops, cafes, mainline train station and local amenities. Whether you are a first-time buyer or an investor, this studio flat could be a great choice.

Please call now to arrange your viewing.

Features

• STUDIO FLAT • NO FORWARD CHAIN • GRADE II LISTED BUILDING • APPROX 89 YEAR LEASE • ELECTRIC STORAGE HEATERS • ALLOCATED PARKING SPACE • CLOSE TO TRAIN STATION • EPC RATING- D